

#EENCONNECT EUROPEAN PROJECTS PARTNER SEARCH



**Auvergne
Rhône-Alpes
Entreprises**

jeudi 12 octobre 2017— P8

Co-developing a decision support system (DSS) for the environment based on GIS and remote sensing

A Greek SME offers services of photogrammetry, remote sensing with geo-information systems (GIS), using high technology equipment and approaches.

Description

The company offers an integrated 3D system for surveying, monitoring and modeling applied for sectors such as the environment, technical projects and building constructions. They are equipped with innovative aerial monitoring infrastructure, and more specifically with a Light Manned Aircraft (LMA) and UAVs with a variety of applicable sensors, for earth observation and for recording critical environmental parameters.

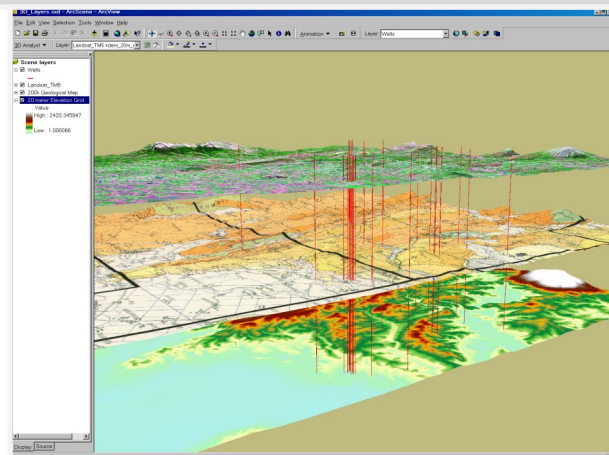
Raw imagery data is possessed through photogrammetric methods and the produced results such as orthoimaging (images containing spatial information in them about the surface depicted), 3D surface models, etc. can be further organized, processed and exploited in GIS and remote sensing applications.

Partner sought

The Greek company is seeking for partners with extensive experience in GIS and remote sensing for co-developing together a decision support system (DSS).

They are looking for other companies, researchers or academia willing to co-develop the DSS platform. The requested partners should be dealing with GIS, remote sensing and DSS platform programming, having also the capacity to commonly exploit the platform for reaching their regional markets. The type of collaboration sought is technical cooperation agreement or in the case of a suitable EU funded topic, a research cooperation agreement.

Program, Call :
Horizon 2020
Theme :
ICT / Environment
Deadline for expressions of interest :
26 February 2018



[CONSULTER LE PROFIL COMPLET](#)



Vous souhaitez être mis en relation avec ce partenaire ?
Contactez :

Emilien Oumehdi

Project Manager Enterprise Europe Network

eoumehti@auvergnerhonealpes-entreprises.fr

Tél : +33(0) 4 72 60 00 49

Mobile : +33(0) 6 29 48 65 53