

#EENCONNECT EUROPEAN PROJECTS PARTNER SEARCH



**Auvergne
Rhône-Alpes**
Entreprises

jeudi 12 octobre 2017 — P10

Smart waste management tool based on real-time data

A Spanish SME has developed a tool for optimizing collection routes by constantly monitoring the content level of waste containers.

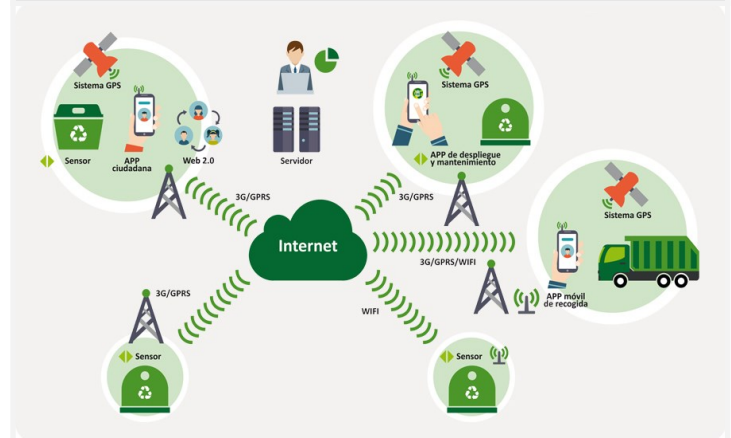
Description

Planning the collection of solid urban waste is based on predefined routes and experience, causing unnecessary costs and underuse of equipment. Often empty containers are collected and full containers overloaded, causing an increase in cleaning costs. In order to be able to research, develop and certify hybridized and electric drive trucks over the complete development process under real road conditions.

The Spanish SME settled in a Technology & Science Park, has developed a novel waste collection, monitoring system to plan, monitor and select the optimal route for garbage trucks based on real time traceability data.

This system optimizes collection routes by constantly monitoring the content level of waste containers.

Program, Call :
Horizon 2020
Theme :
ICT / Environment
Deadline for expressions of interest :
15 February 2018



By installing sensors in the containers, it is possible to receive real-time alerts for collection based on container content level or for temperature variation (fires) enabling a reduction in damage liability and response time.

Partner sought

Current and potential domains of applications:

- Garbage management in Smart Cities.
- The solution can be applied to many other contexts like management of stock or supplier chains.

The Spanish SME is interested in getting in contact with several types of partners. Collaboration to be approached would depend on the partner needs or type: Final users (Public Administrations - areas of cleaning and waste management), ICT services and/or sensing firms. Research Centres are sought for collaborative research projects.

[CONSULTER LE PROFIL COMPLET](#)



**Vous souhaitez être mis en
relation avec ce partenaire ?
Contactez :**

Emilien Oumehdi

Project Manager Enterprise Europe
Network

[eoumehti@auvergnerhonealpes-
entreprises.fr](mailto:eoumehti@auvergnerhonealpes-entreprises.fr)

Tél : +33(0) 4 72 60 00 49

Mobile : +33(0) 6 29 48 65 53